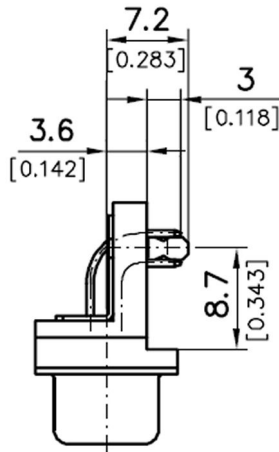


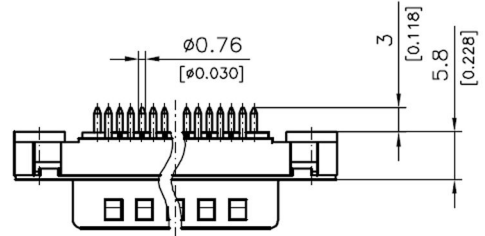
Low Profile D Subminiature Connectors

Due to their low profile the connectors can be used in typical applications such as in 19" assembly systems meeting DIN41494 standards.

Dimensions



Right Angle PCB Mount



Straight PCB Mount



Ordering Code

D P S - 25 - G D 1 (012)

Series:
D = D Subminiature

Product Gender:
P = Plus
S = Socket

Product Version:
S = Standard version with screw machined captive contacts
L - Standard version with stamped and formed captive contacts

No. of contacts:
9, 15, 25, 37, 50

Termination Style:
G = Right Angled Low Profile
(centre to PCB 3.6mm) 2.54mm (.1")
row to row 0.6mm (.024") dia.
T = Straight low profile (PCB to flange 5.8mm)
2.84 row -row

Contact Plating:
A = 0.2 microns (0.000008") Au over nickel
C = 0.000030" Au over nickel
D = Gold flash over nickel

Mounting Style:
27 = 4-40 UNC thread, front mounted
28 = M3 thread, front mounted

Modification Code:
(011) = Socket with tin plated shell
(012) = Plug with tin plated indented shell