

SXR Series – Part Numbering



Features

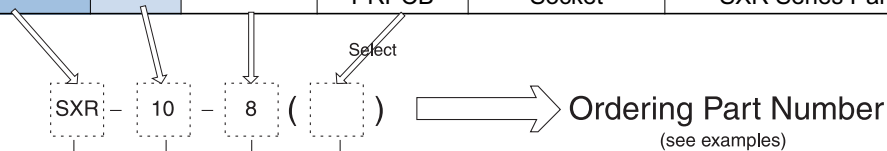
- Miniature
- Ultra Light Weight
- Ground Function

Applications

- Professional Audio
- Professional Video
- Camera

Part Numbering

Part Number	Size	Number of Contact	Suffix	Contact Type	Notes	Page
Series						
SXR	10	8	P	Pin	SXR Series Plug	72
			R	Socket	SXR Series Receptacle	72
			PRPCB	Socket	SXR Series Panel PCB Receptacle	72



Connector Series

SXR Series

Size

10

No. of Contact

8

Body Type

P : Plug

R : Receptacle (solder termination)

PRPCB : Panel Receptacle (PCB termination)

Examples

SXR - 10 - 8 (P)

SXR series - Size 10 - 8 contacts (Plug)

SXR - 10 - 8 (R)

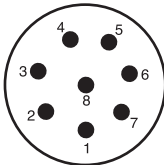
SXR series - Size 10 - 8 contacts (Receptacle)

SXR - 10 - 8 (PRPCB)

SXR series - Size 10 - 8 contacts (Panel Receptacle PCB type)

Specifications subject to change without notice. Consult Sam Woo Electronics for the latest specifications.

Major Performances / Contact Arrangements

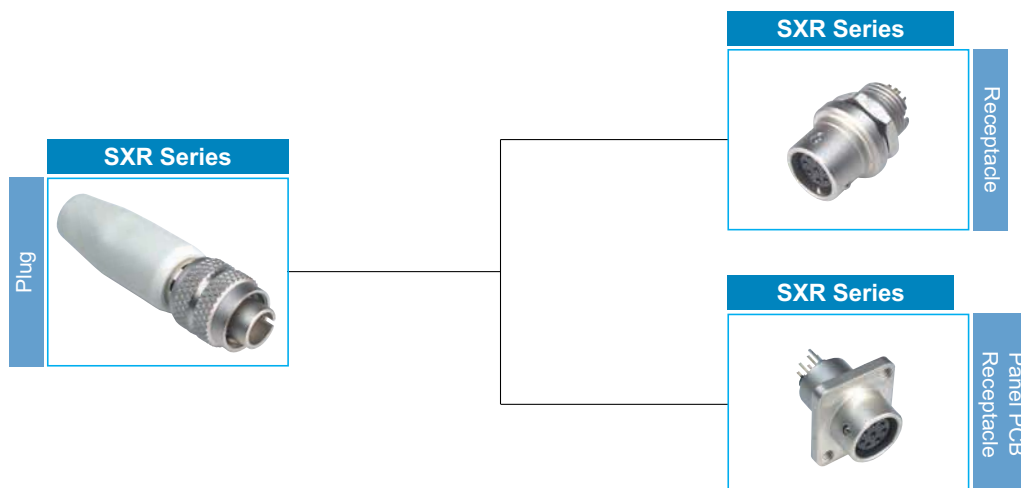
Performance	Size / No of Pin	Size 10
		8
Withstanding Voltage (per min) ¹		AC 300V
Rated Current		2A
Insulation Resistance (Minimum) ²		1,000MΩ
Contact Resistance (Maximum) ³		20mΩ
Solder Pot Inside Diameter		∅0.9
Contact Arrangement		

- ! ¹ Withstanding voltage is the tested voltage value in this table.
- ² Insulation resistance is measured at DC 100V.
- ³ Contact resistance is measured at DC 1A.
- Values are from tested items and may not apply to all connectors.
- Specifications subject to change without notice.
- Consult Sam Woo Electronics for the latest specifications.

Material Used / Finishing Material

		Material	Finish
Body		Alluminum alloy	Nickel plate
Insulator		PBT resin	Black
Contacts	Pin	Brass	Silver plate
	Socket	Phosphor bronze	Silver plate

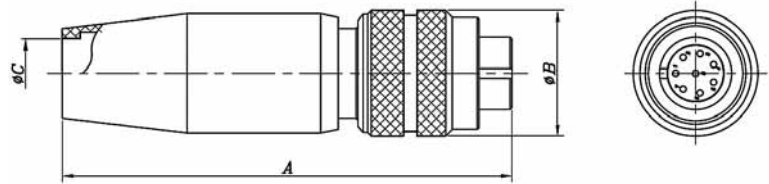
SXR Series Mini-map



Specifications subject to change without notice. Consult Sam Woo Electronics for the latest specifications.

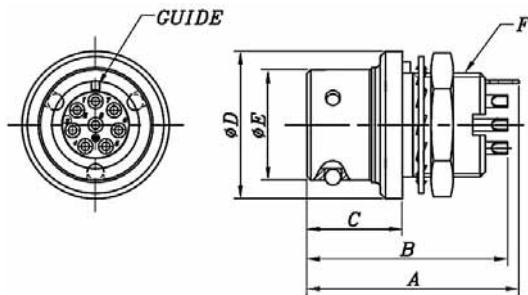
SXR Series – Plug, Receptacle

SXR Plug



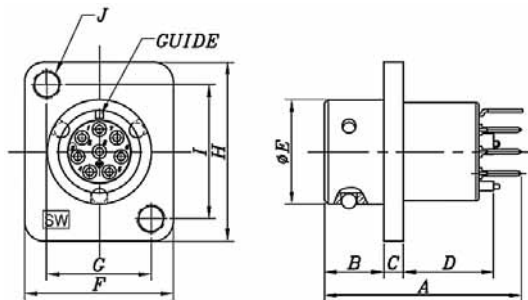
Part Number	A	ØB	ØC
SXR-10-8 (P)	50.0	14.0	8.0

SXR Receptacle



Part Number	A	B	C	ØD	ØE	F
SXR-10-8 (R)	20.2	19.1	9.1	14	10.5	M10×0.75P

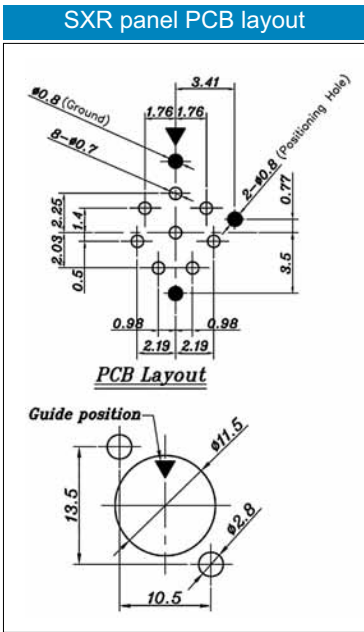
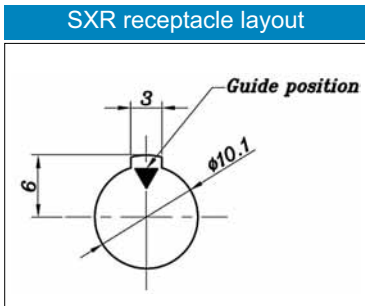
SXR Panel PCB Receptacle



Part Number	A	B	C	D	ØE	F	G	H	I	J
SXR-10-8 (PRPCB)	20	6	2	9.1	10.5	15	10.5	18	13.5	M2.5×0.45P

Specifications subject to change without notice. Consult Sam Woo Electronics for the latest specifications.

SXR Receptacle Layout



Specifications subject to change without notice. Consult Sam Woo Electronics for the latest specifications.