

SH Series – Part Numbering / Specifications



Features

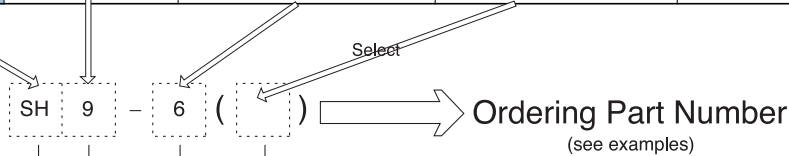
- Compact
- Lasting durability
- Contemporary design

Applications

- Microphone circuitry
- Wireless communication

Part Numbering

Part Number	Size	Number of Contact	Suffix (Contact Type)	Notes
SH	9	6	P	Plug(Pin contact)
			R	Receptacle(Socket contact)



Examples

SH - 9 - 6 (P)

SH series - Size 9 - 6 contacts - (Plug)

SH - 9 - 6 (R)

SH series - Size 9 - 6 contacts (Receptacle)

Connector Series

SH Series

Size

9

No. of Contacts

6

Body Type

P : Plug

R : Receptacle

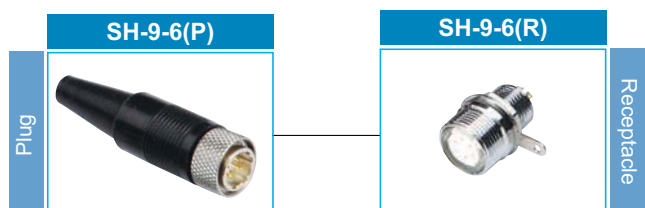
Major Performances / Contact Arrangements

Performance Size/No. of Contacts		Rated Voltage	Withstanding Voltage/min	Current	Insulation Resistance (Minimum)	Contact Resistance (Maximum)	Contact Ø	Solder Pot Ø	Contact Arrangement
9	6	AC 100V DC 140V	AC 300V	2A	200MΩ	10mΩ	Ø0.7	Ø0.7	

Material Used / Finishing Material

		Material	Finish
Body		Brass	Chromium plate
Insulator		Glass-filled polyacetal	White
Contacts	Pin	Brass	Gold plate
	Socket	Phosphor bronze	Gold plate

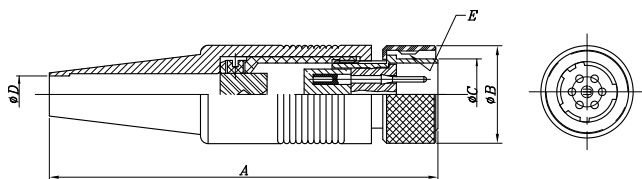
SH-9-6 Mini-map



Specifications subject to change without notice. Consult Sam Woo Electronics for the latest specifications.

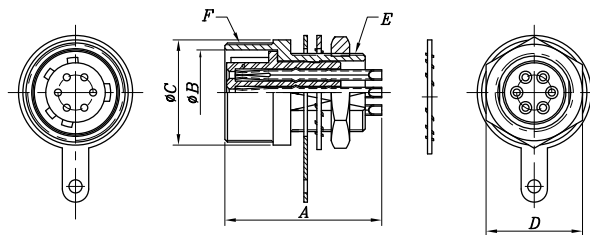
SH Plug / Receptacle, Cable Assembly Instruction – SH Series

SH-9-6(P)



Part Number	A	ØB	ØC	ØD	E
SH-9-6(P)	51.0	12.9	9.4	4.9	M11×0.75P

SH-9-6(R)



Part Number	A	ØB	ØC	D	E
SH-9-6(R)	190	9.7	12.0	M9×0.75P	M11.5×0.75P

Cable Assembly Instruction

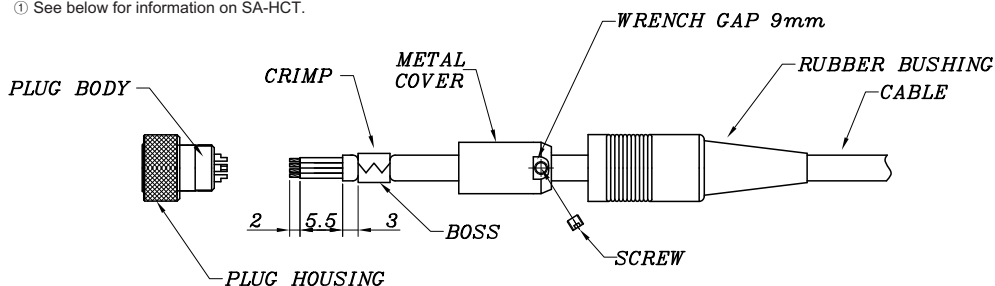
General Instruction / Information

- Soldering must be done as quickly and carefully as possible to prevent damage to insulator.
- Receptacles do not require additional instructions.

Wiring Sequence

- ① Select cable according to outer diameter and cross section, lower than 0.129mm²(AWG#26).
- ② Insert **RUBBER BUSHING** to cable.
- ③ Insert **METAL COVER** to cable.
- ④ Strip cable per dimension given and loosen braid.
- ⑤ Secure **PLUG BODY** to jig for soldering.
- ⑥ Solder stripped cable to pin.
- ⑦ Fasten **CRIMP** using hand crimp tool (SA-HCT^①)
- ⑧ Screw **PLUG HOUSING** and **METAL COVER**.
- ⑨ Tighten **SCREW** using 0.3N force onto one of two embossed parts of **CRIMP**.
- ⑩ Cover **RUBBER BUSHING** onto **METAL COVER**.

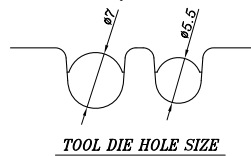
① See below for information on SA-HCT.



SA-HCT (Hand Crimp Tool)



Specially designed for Sam Woo's connector, the low-cost and efficient SA-HCT provides the best crimping results. Use Ø7.0 for SH series.



Specifications subject to change without notice. Consult Sam Woo Electronics for the latest specifications.