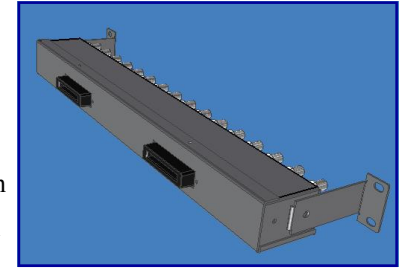
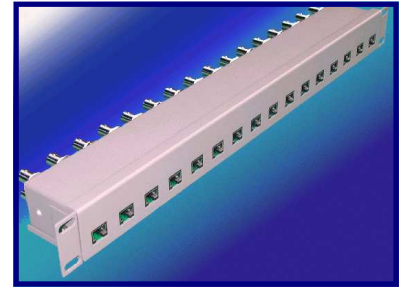


19" Rack Mount G.703 Balun Panels

16 Dual paths in 1U Height

Designed for ease of installation the units have the following features:

- ◆ 100% tested for reliability and durability
- ◆ Meets or exceeds G.703 specification
- ◆ 16 RJ45 connectors to 32 BNC Coaxial connectors
- ◆ Fully enclosed "tamper proof" design
- ◆ Removable mounting brackets allow unit to be recessed or reversed



The Cambridge Connectors' Dual Path Balun Panel for use in G.703 Telecommunication Applications enables data, carried over 75 ohm co-axial unbalanced cables, to be converted into balanced signals on low cost 120 ohm twisted pair cables. This has two benefits, cabling costs are greatly reduced and much higher wiring densities can be achieved. In addition, reliability is enhanced due to the higher integrity of connection that can be achieved. The physical connection is achieved through Female BNC connectors to fully screened RJ45 sockets.

Designed to meet CCITT G.703 Specifications, the 19" rack mounted panel comes in 1U size and is fully enclosed in a tamper proof steel case. Grounding is achieved through either masked zinc areas on the adjustable mounting brackets or by using a 4mm rear mounted grounding stud. The balun panel, which requires no external power, features exceptionally low signal loss exceeding G.703 Specification. The mounting brackets are available in two styles, standard or long. The long versions enable the panel to be recessed if required by 50mm. Both brackets can be reversed to allow either the BNC connectors or the RJ45 connectors to be front facing.

TECHNICAL SPECIFICATION

Mechanical:

RJ45 connector - Molex 1.3 microns Gold over Nickel - > 500 cycles

BNC connector - Nickel plated body, Gold plated contact - > 100 cycles

Electrical:

Impedance: 75 ohm unbalanced to 120 ohm balanced

The insertion loss is less than the curve formed by the straight-line insertion loss mask:

10 KHz	20 KHz	100 KHz	1 MHz	5 MHz	10 MHz	20 MHz
3.0 dB	1.0 dB	0.5 dB	0.5 dB	0.5 dB	1.0 dB	3.0 dB

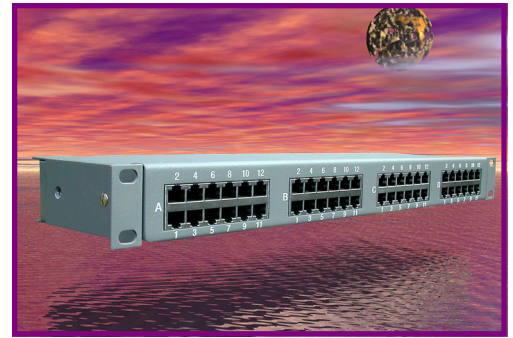
Bi-directional return loss is more negative than -20dB between 100KHz and 5MHz.

Part Number	Description
NPGSB-32-DA	19" Balun panel 1U high - 16 x RJ45 female to 32 x BNC female
71N-4031-00	Standard Mounting Bracket
71N-4032-00	Elongated Mounting Bracket (allows 50mm recess)
NPGSB-16-DA	19" Balun panel 1U high - 8 x RJ45 female (front) to 16 x BNC female (rear)
NEW	19" Balun panel 1U high - 2 x Telco to 32 x BNC female

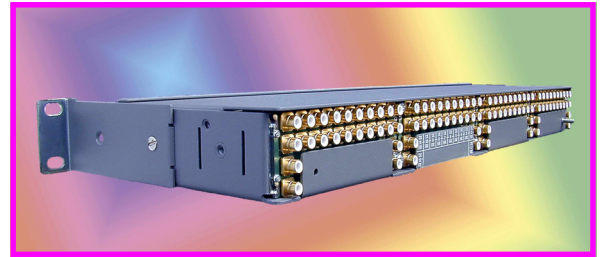
Compact 96x Balun System 19" Panel with 96 Baluns in 1U height

Features:

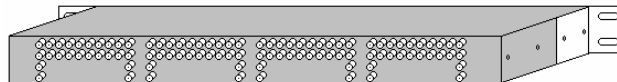
- Connects 75 ohm coaxial and 120 ohm twisted pair cabling systems
- Designed to exceed CCITT G.703 specifications
- Provides 24, 48, 72 or 96 paths in a 1U 19" panel
- Adjustable mounting brackets can be reversed and recessed
- Uses Industry Standard RJ45 and HDC43 connectors



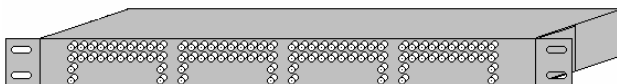
Cambridge Connectors has introduced this new rack mounted balun system aimed at applications where **ultra high wiring densities** are required. Packing 96 telecom baluns into a 1U high 19" panel, the Compact 96x series, is believed to provide the highest wiring densities of any balun system in the market. Using industry standard RJ45 and HDC43 connectors, the Compact 96x series provides the physical connection between coaxial cables at 75 ohms and twisted pair wiring systems at 120 ohms. Designed to exceed CCITT G.703 specifications, the 96x series comes in 4 versions which provide 24, 48, 72 or 96 baluns in a rugged 19" enclosure. With adjustable mounting brackets the standard configuration of RJ45 connectors to the front and HDC43 to the rear can be reversed and recessed if required. This new balun system meets the demands of telecom carriers, OEMs, system integrators, installers and project managers seeking to reduce installation and maintenance costs especially in applications where space is at a premium.



Compact 96x panel showing RJ45 connectors at the front



Compact 96x panel showing HDC43 connectors at the rear



Compact 96x panel reversed showing HDC43 connectors at the front

Part Number	Configuration
NPGSB-24-JA	12 RJ45 to 24 HDC43
NPGSB-48-JA	24 RJ45 to 48 HDC43
NPGSB-72-JA	36 RJ45 to 72 HDC43
NPGSB-96-JA	48 RJ45 to 96 HDC43

NB Units are not user upgradable - please specify configuration at time of ordering.



Now available with D connector termination

Configuration
 2 x 25D to 24 HDC43
 4 x 25D to 48 HDC43
 6 x 25D to 72 HDC43
 8 x 25D to 96 HDC43

