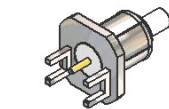
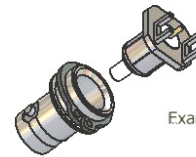


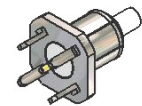
## Precision 75 Ohm coaxial connectors for HDTV Broadcast Applications

## Two part design for rapid board swap

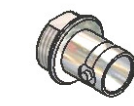
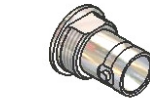
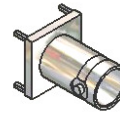
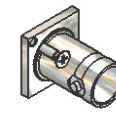
## PCB Inners

PCB Inner Edge Mount  
1.6mm, 2.4mm, 3.2mmStandard Hex  
nutOptional round  
nutExternal  
Circlip

Example



PCB Inner Top Mount

Threaded Bulkhead  
Front MountingThreaded Bulkhead  
Rear MountingCirclip Bulkhead  
Front MountingTop Entry  
PCB MountingScrew Fastening Bulkhead  
Rear Mounting

## Features

- Precision 75 Ohm BNC Connector
- Designed for HD SDV applications
- Two part construction for rapid board swap
- PCB or front and rear bulkhead mounting
- Circlip or threaded versions
- RoHS Compliant

## General Description

Two piece BNC female bulkhead, Precision 75 ohm connectors, available in the following parts: -

Inner for 1.6 mm PCBs.	XBT-1058-NGAY	Outer for Circlip Bulkhead Mount	71X-0037-33
Inner for 2.4 mm PCBs	XBT-1059-NGAY	Outer for Threaded Rear Bulkhead Mount	71X-0038-33
Inner for 3.2 mm PCBs	XBT-1060-NGAY	Outer for Threaded Front Bulkhead Mount	71X-0039-33
Inner for top entry	XBT-1061-NGAY	Outer for PCB Mount	71X-0040-33
12 mm Circlip	71X-0036-00	2 part BNC outer with screw fastening	71X-0044-33

## Applications

This two part 75 ohm BNC female connector range is specifically designed for the broadcast industry. It allows daughter boards in switching and routing equipment to be swapped out without the necessity of removing attached patch cables; this greatly reduces downtime. The range includes: - PCB mounting; Rear and Front mounting bulkhead versions, secured by threaded nuts; and also a circlip bulkhead version. The PCB mounting "inner" is edge mounting to ensure Precision 75 ohm performance.

## Specification

## Electrical

Impedance	75 Ohm
Frequency Range	0 – 3.0 GHz
Working Voltage	500 V <sub>rms</sub>
Dielectric Withstanding Voltage	1500 V <sub>rms</sub>
Reflection Factor (V <sub>SWR</sub> )	1.08 (Max) DC-1.5GHz 1.16 (Max) 1.5GHz-3.0GHz
Contact Resistance	Centre contact 1.5 m ohm Outer contact 1.0 m ohm
Insulation Resistance	> 5000 Meg Ohm

## \*Materials

Centre Pin	Phosphor Bronze / 10µ " Au
Metal Parts	Brass / Nickel
Insulators	Teflon®

\* Other materials such as Gold Plating are available to customer requirement.

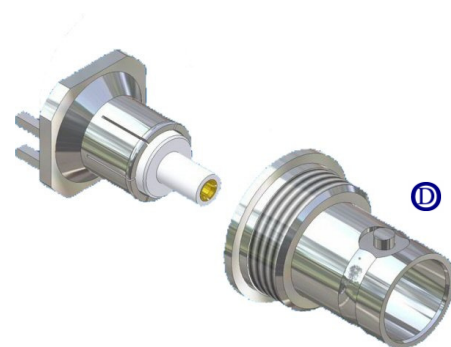
**High definition broadcast applications** - this Precision 75 ohm BNC connector range, incorporates an innovative PCB edge mounting style. This provides a straight signal path along the connector, through the point of interface and onto the PCB track with minimal loss of transmission characteristics.

For more details contact our applications engineers on.

Tel: 01223 860041 Fax: 01223 863625

Email: [technical@cambridgeconnectors.com](mailto:technical@cambridgeconnectors.com)

Web site [www.cambridgeconnectors.com](http://www.cambridgeconnectors.com)



© All Connectors Design Right Protected

