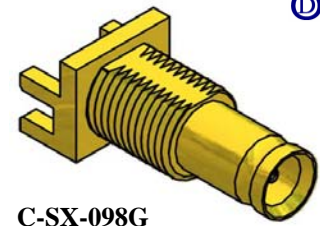


**Precision 1.0/2.3 connectors for 3G SDI Broadcast Applications
PCB Edge mounting**

Features

- Meets SMPTE 424M Standard
- 8mm pitch can double wiring densities
- PCB edge mounting style minimises signal path discontinuities



C-SX-098G



General Description

1.0/2.3 female bulkhead precision 3G PCB edge mounting low profile connector.

Applications

In addition to SDI, HDI and 3G-SDI digital broadcast use, this low profile 1.0/2.3 connector is ideal for industrial process control, data acquisition and high speed communication applications where high wiring densities are crucial.

Specification -

Electrical

Nominal Impedance	75 Ohm
Frequency Range	0 - 3.0 GHz
Working Voltage	250Vrms
Dielectric Withstanding Voltage	750Vrms

Reflection Factor (VSWR)

DC—1.5GHz	1.02 (Max)
1.5—3.0GHz	1.05 (Max)

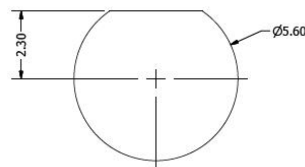
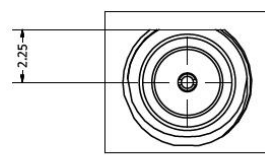
Contact Resistance	Centre Contact
	4.0 m ohm
Insulation Resistance	> 1000 meg ohm

Materials

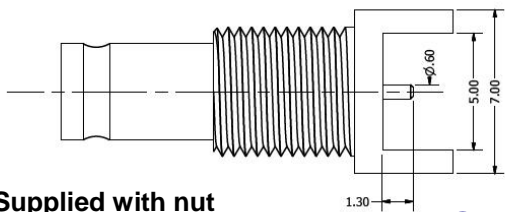
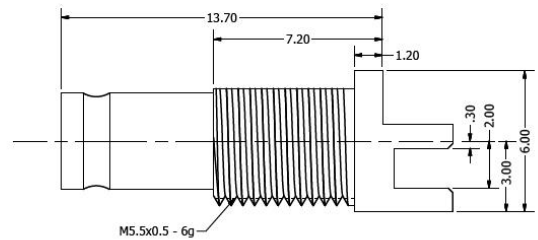
Centre Pin	BeCu / 10u" Au
Body finish	Standard — Brass/Au
Insulators	PTFE

Environmental

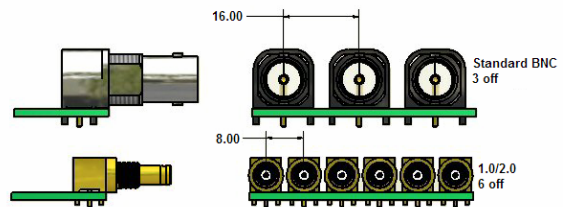
Temperature Range	- 65 to +85° C
Mating Cycles	500



Panel Cut Out



Supplied with nut



Comparison between BNC and 1.0/2.3 connectors

