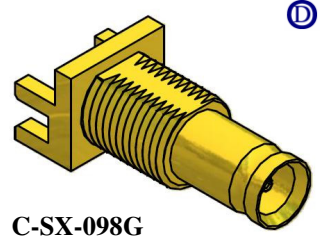


**Precision 75 Ohm 1.0/2.3 connectors for 3G SDI Broadcast Applications**  
**Edge card mounting**

**Features**

- For use in SDI, HDI, 3G-SDI digital broadcast applications
- 8mm pitch can double wiring densities
- PCB edge mounting style minimises signal path discontinuities



ⓓ

**General Description**

1.0/2.3 female bulkhead precision 75 ohm PCB edge mounting low profile connector.

**Applications**

In addition to SDI, HDI and 3G-SDI digital broadcast use, this low profile 1.0/2.3 connector is ideal for industrial process control, data acquisition and high speed communication applications where high wiring densities are crucial.

**Specification -**

**Electrical**

Impedance	75 Ohm
Frequency Range	0 - 3.0 GHz
Working Voltage	250Vrms
Dielectric Withstanding Voltage	750Vrms

**Reflection Factor (VSWR)**

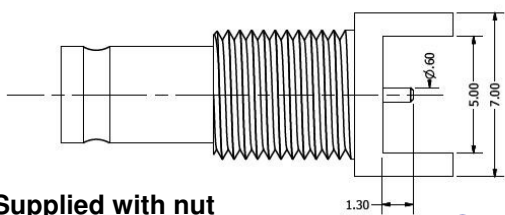
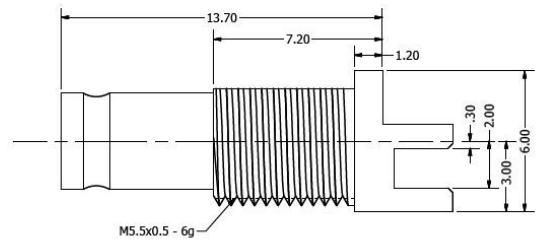
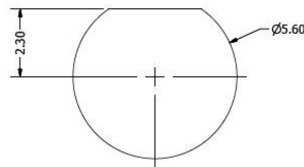
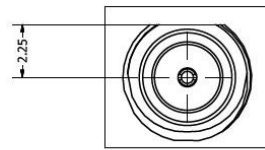
DC—1.5GHz	1.02 (Max)
1.5—3.0GHz	1.05 (Max)

Contact Resistance Centre Contact

4.0 m ohm

Insulation Resistance

> 1000 meg ohm



Supplied with nut

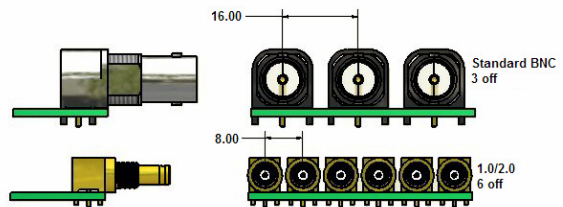
Ⓒ

**Materials**

Centre Pin	BeCu / 10u" Au
Body finish	Standard — Brass/Au
Insulators	PTFE

**Environmental**

Temperature Range	- 65 to +85° C
Mating Cycles	500



Comparison between BNC and 1.0/2.3 connectors

